



**ALASKA DIVISION OF HOMELAND
SECURITY & EMERGENCY
MANAGEMENT**



**Daily Situation Report
26-112 • April 22, 2026**

Toll-Free 1.800.478.2337

Anchorage Area 907.428.7000

SEOC 907.428.7100

<p><u>SEOC Preparedness Level</u> Level 1-Routine Operations</p>	<p>http://ready.alaska.gov</p>	<p><u>Alaska Military Installation Force Protection Level:</u> FPCON Bravo</p>
<p><u>NTAS Bulletin</u> There are no current advisories https://www.dhs.gov/national-terrorism-advisory-system</p>	<p><u>Maritime Security (MARSEC)</u> Level:1 Minimum Appropriate Security Measures</p>	

(Significant changes from previous situation reports are red.)

Significant Issues:

None

Division of Homeland Security and Emergency Management Public Information:

For current press releases, see:

<https://ready.alaska.gov/PublicInformation/PressReleases>

Department of Health (DOH):

For current information, see: <https://health.alaska.gov/en/>

Travel Alerts and Conditions:

Nenana River Bridge at Moody (MP 243). Maintenance Work. 4/14/2026

For current driving conditions, dial 511 or visit: <https://511.alaska.gov/>

Barry Arm Landslide / Tsunami Risk:

For the latest information on the Barry Arm Landslide and Tsunami risk, click here:

<https://dgggs.alaska.gov/hazards/barry-arm-landslide.html>

Earthquakes:

United States Geological Service (USGS) Earthquake Information: [Earthquake Hazards Program | U.S. Geological Survey](#) - National Tsunami Warning Center:

<https://tsunami.gov/>

Alaska Volcanoes:

Great Sitkin: Alert Level: Watch and Aviation Color Code: Orange

Shishaldin: Alert Level: Advisory and Aviation Color Code: Yellow

For Alaska Volcano updates, go to: <https://www.avo.alaska.edu/>

Air Quality Index (AQI) Advisories:

For the most up-to-date Air Quality Index Advisories:

<https://dec.alaska.gov/Applications/Air/airtoolsweb/Advisories>

Spills of Oil and Hazardous Substances:

The Alaska Division of Environmental Conservation (ADEC) Spill Prevention and

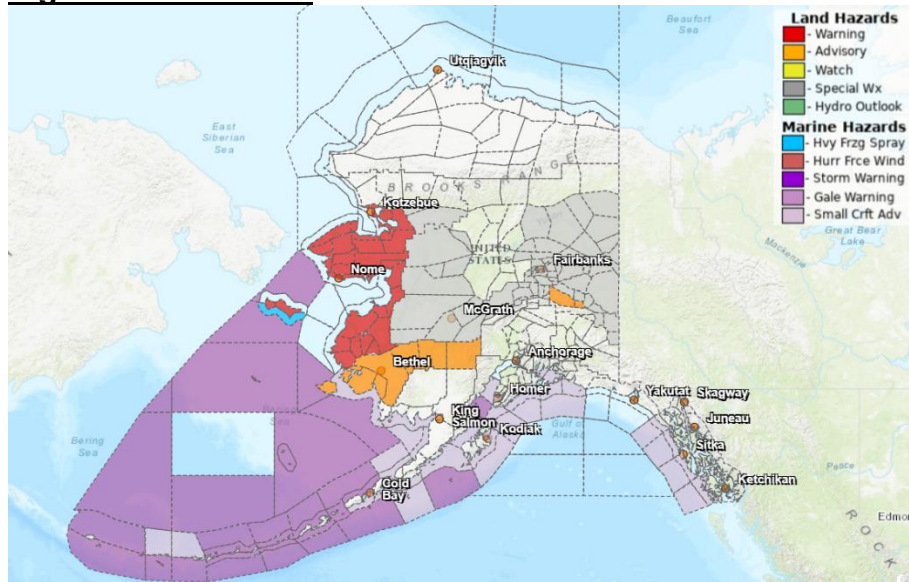
Response page is located at: <https://dec.alaska.gov/spar/ppr/spill-information/response/>

Alaska Cyber Security Information:

State Employees may sign up for cybersecurity notifications and alerts at:

<https://oit-int.alaska.gov/security/>

Significant Weather:



WARNINGS:

Yukon Delta Coast; Lower Yukon River: Blizzard Warning from 10 PM this evening to 4 PM AKDT Thursday.

Shishmaref; Bering Strait Coast; Southern Seward Peninsula Coast; Interior Seward Peninsula; Eastern Norton Sound and Nulato Hills: Blizzard Warning from 4 AM Wednesday to 10 PM AKDT Thursday.

Lower Kobuk Valley; Baldwin Peninsula; Northern Seward Peninsula: Blizzard Warning from 10 AM Wednesday to 10 PM AKDT Thursday.

St. Lawrence Island: Blizzard Warning from 4 AM Wednesday to 4 AM AKDT Friday.

ADVISORIES:

Kuskokwim Valley West; Kuskokwim Valley East; Lime Village: Winter Weather Advisory until 10 AM AKDT this morning.

Kuskokwim Delta Coast and Nunivak Island; Interior Kuskokwim Delta: Winter Weather Advisory until 10 AM AKDT this morning.

Eastern Alaska Range North of Trims Camp: Wind Advisory from 10 PM Wednesday to 4 PM AKDT Friday.

STATEMENTS:

Upper Kobuk Valleys; Lower Koyukuk Valley; Middle Yukon Valley; Lower Yukon and Innoko Valleys; North Slopes of the Western Alaska Range; Upper Kuskokwim Valley: Another round of snow and rain Wednesday into Thursday.

Yukon Flats; White Mountains and High Terrain South of the Yukon River; Fortymile Country; Upper Tanana Valley; Delta Junction; Upper Chena River Valley; Tanana Flats; Eielson AFB and Salcha; Goldstream Valley and Nenana Hills; Chatanika River Valley; Two Rivers; Fairbanks Metro Area; Nenana; Northern Denali Borough; Eastern Alaska Range North of Trims Camp: Temperatures plummet tonight with ice concerns.

For more information, go to <https://www.weather.gov/arh>

Avalanche Conditions:



Hatcher Pass – Considerable at all elevations.

Chugach State Park – High at all elevations.

Turnagain Pass and Girdwood – Considerable 1000' and above. Moderate Below 1000'.

Summit Lake – **Moderate at all elevations.**

Seward and Lost Lake – Considerable 1000' and above. Moderate Below 1000'.

Valdez: Maritime, Intermountain, Continental – Considerable at all elevations.

Douglas Island – Moderate at Upper Elevations. Low at middle and lower elevations.

For more information and the most current avalanche conditions, go to <https://alaskasnow.org>

The Next Situation Report will be on **April 23, 2026**. A significant change in situation or threat level will prompt an interim report. This report is posted on the internet at <https://ready.alaska.gov/sitrep>.

To register for email distribution, go to: <http://list.state.ak.us/mailman/listinfo/dhsem.situation.report>. Direct questions regarding this report to the SEOC at 907-428-7100 or seoc@alaska.gov